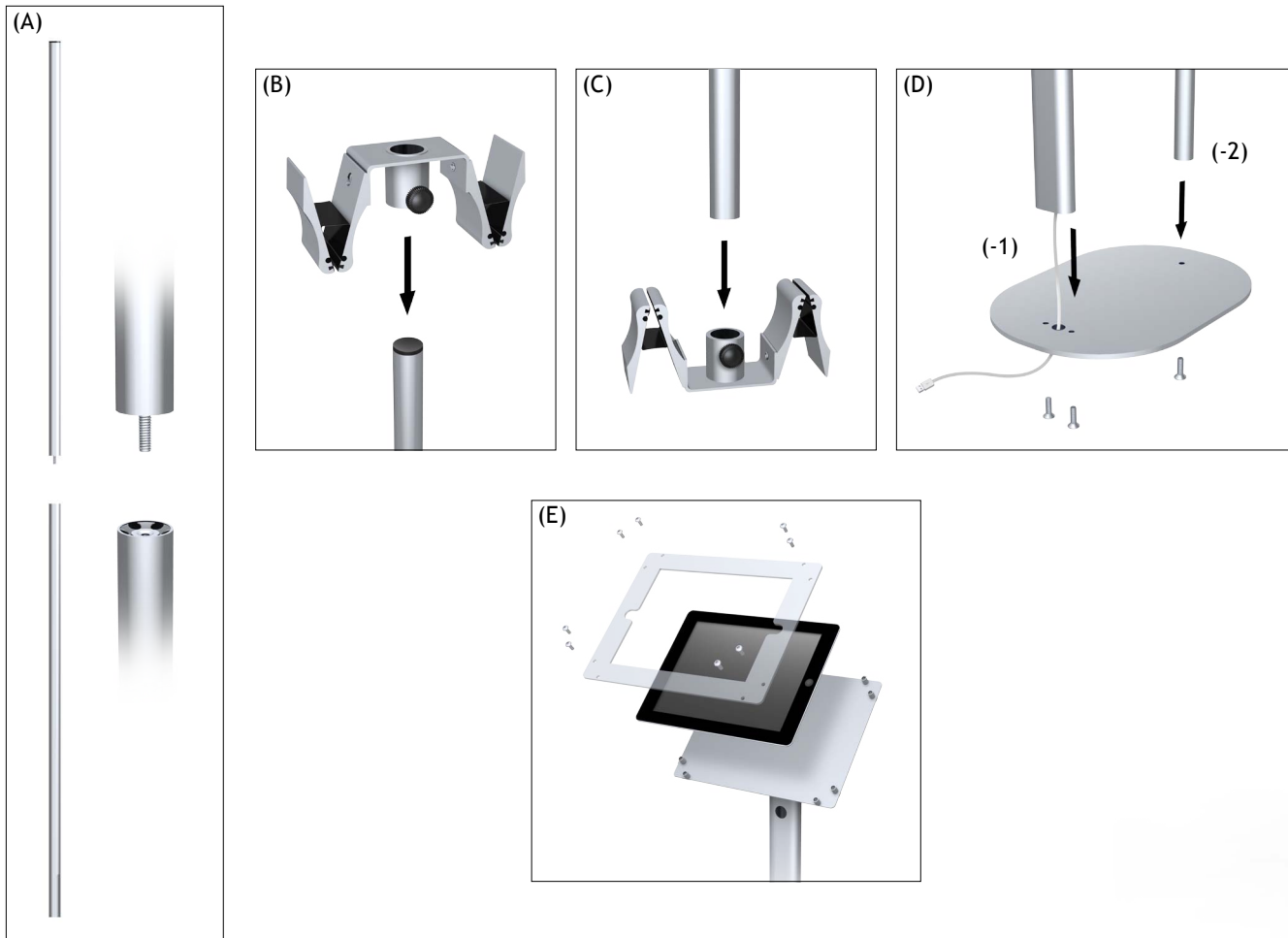


# Signholders (iPad Stand)

1. Screw together the two upright sections (fig. A).
2. Slide top clamp over upright and screw knob into place at desired location (fig. B).
3. Slide upright into bottom clamp and screw knob into place at desired location (fig. C).
4. Open clamps and insert graphic (not shown).
5. Align iPad upright over base. Feed iPad cord through center hole and screw into place using two (2) Philips head screws (fig. D-1).
6. Align clamp upright over base and screw into place using Philips head screw provided (fig. D-2).
7. Remove acrylic cover using small tamper-proof key provided. Place iPad inside and reassemble unit (fig. E). If ball joint loosens on back, use the large tamper-proof key to retighten it securely.

Note: Clamps shown below are for the IPHC2 stand, but setup is the same for the IPHC1 stand.



## Applicable Products:

IPHC1 (Single)  
IPHC2 (Double)



IPHC2-S shown