

Formulate Designer Series 10' Backwall - Kit 08

FMLT-DS-10-08

Formulate™ Designer Series 10ft displays have unique stylistic features and shapes, are portable and easy to assemble. The aluminum tube frame features snap-buttons and/ or spigot connections and zipper pillowcase fabric graphics. All displays come in portable, wheeled transit cases. Simply pull the pillowcase fabric graphic(s) over the frame and zip.



features and benefits:

- Premium aluminum tube frames with snap button/ spigot assembly
- Easy to store and ship
- Quick to set up
- Weighted feet for added stability
- Two zipper pillowcase fabric graphics for walls and two zipper pillowcase graphics for canopy
- Kit includes: monitor kiosk featuring a medium monitor mount, can hold 40-50" monitor/ max weight 75lbs
- Lifetime limited hardware warranty against manufacturer defects

dimensions:

Hardware

Assembled unit:
114.59" w x 97.41" h x 37.09" d
2910.6mm(w) x 2474.2mm(h) x 942.01mm(d)

Approximate weight with cases:
196 lbs / 88.9 kgs

Shipping

Packing case(s):
3 OCE Cases

Shipping dimensions:
16.75" w x 64.25" h x 16.88" d
425.5mm(w) x 1632mm(h) x 428.8mm(d)

Approximate total shipping weight
(includes cases & graphics):
213 lbs / 96.6 kgs

Graphic

Please be sure to include a 2" bleed around the perimeter.

Refer to related graphic template for more information.

Visit:
www.exhibitors-handbook.com/graphic-templates

additional information:

Graphic material:
dye-sublimation zipper pillowcase fabric

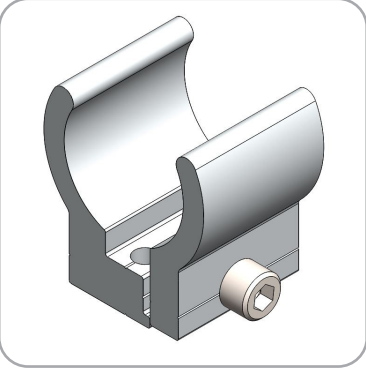
We are continually improving and modifying our product range and reserve the right to vary the specifications without prior notice. All dimensions and weights quoted are approximate and we accept no responsibility for variance. E&OE. See Graphic Templates for graphic bleed specifications.

Included In Your Kit

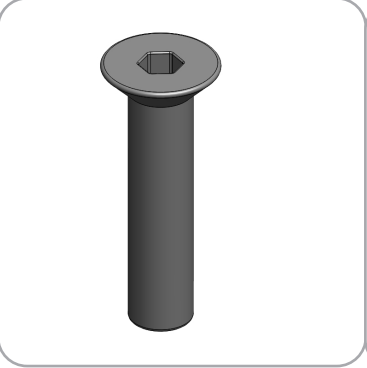
Tools, Components, & Connectors



ALLEN KEY SET x1



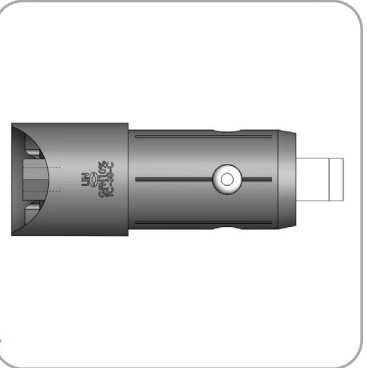
TC-30 x3



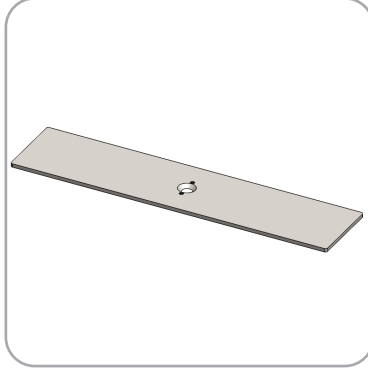
LN114-SCRW x1



TC-30-A-90 x2



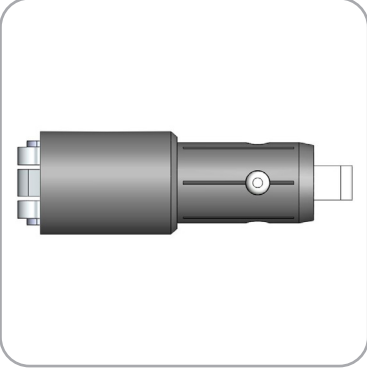
TC-30-B x2



LN114-S2-450 x1



TC-30-C x10



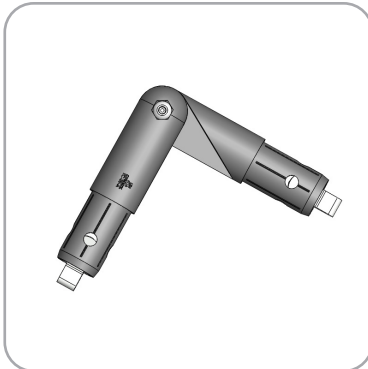
TC-30-L x2



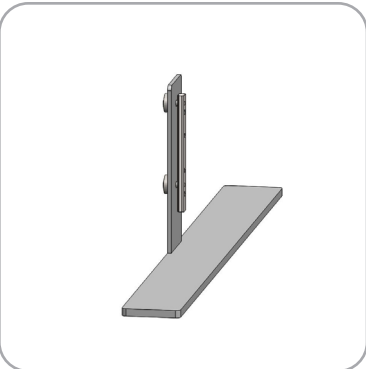
TC-30-90T x4



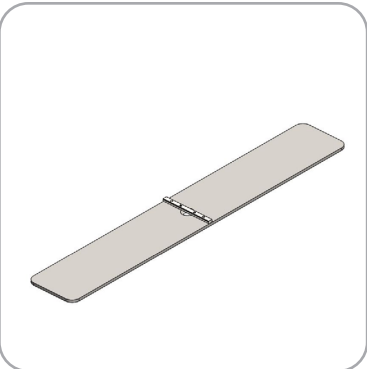
TC-30-90B x1



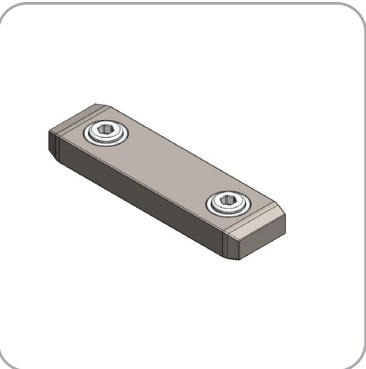
TC-30-A-70°-INSIDE



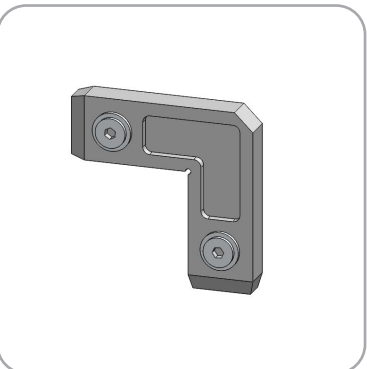
SW-FOOT-500-LN x1



LN114-S2-650-A x1



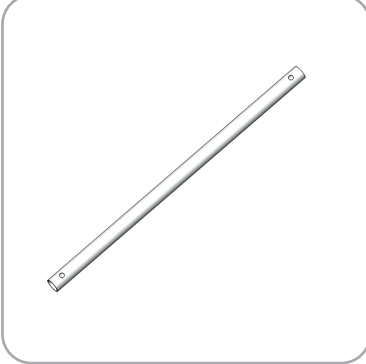
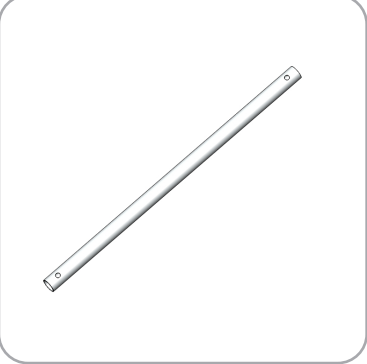
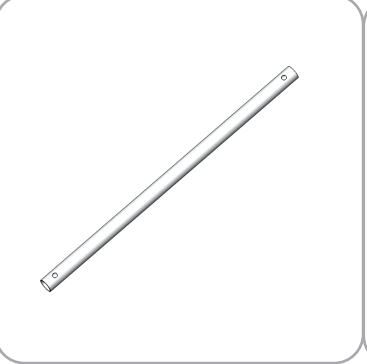
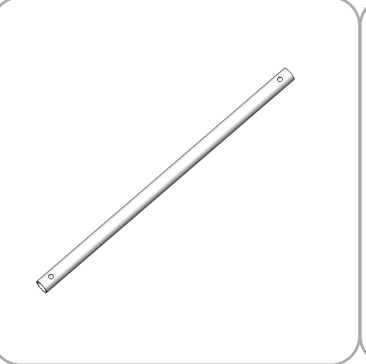
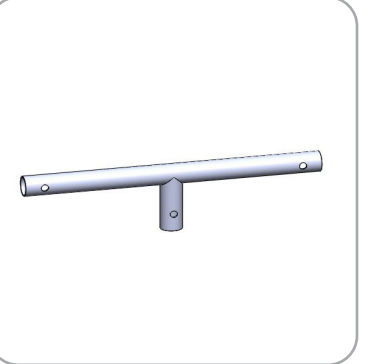
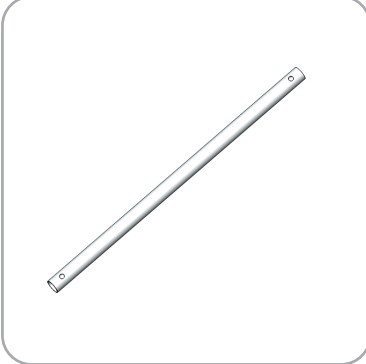


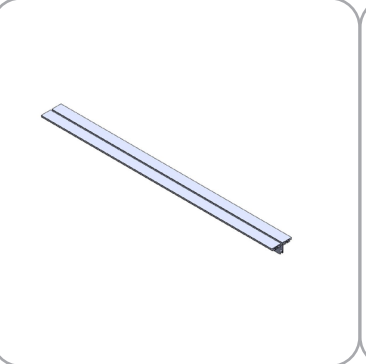
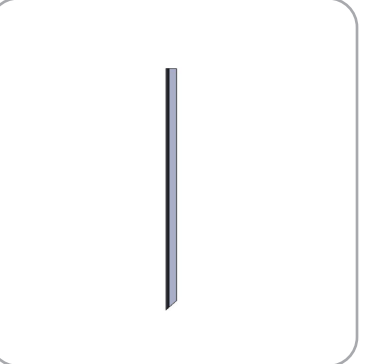
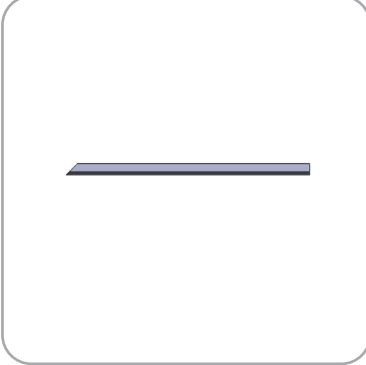
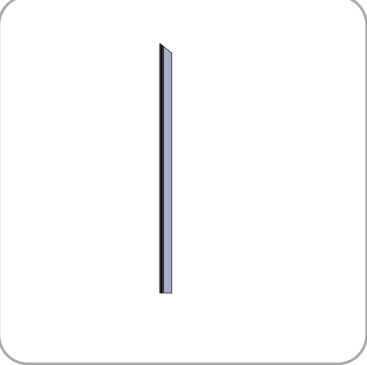
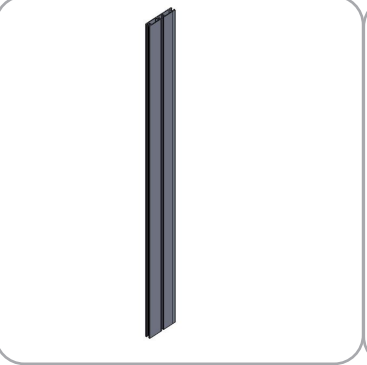
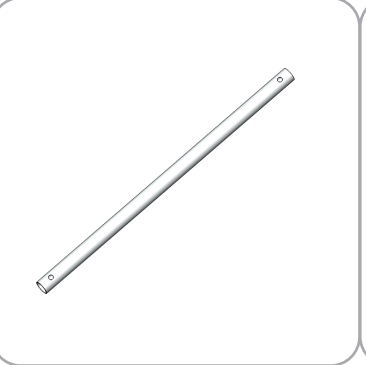
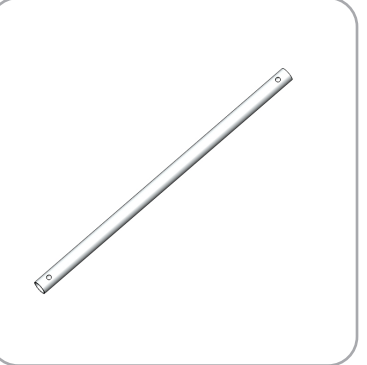
IB2 x8



CB9 x2

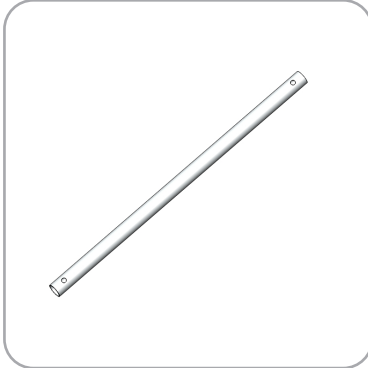
Included In Your Kit

Tubes

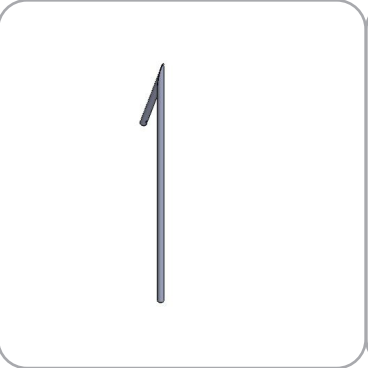
				
DS-10-08-A-T1 x6	DS-10-08-A-T2 x2	DS-10-08-A-T3 x2	DS-10-08-A-T4 x3	DS-10-08-A-T5 x2
				
DS-10-08-A-T6 x2	DS-10-08-B-T1 x1	DS-10-08-B-T2 x1	DS-10-08-B-T3 x2	DS-10-08-B-T4 x2
				
DS-10-08-B-T5 x1	DS-10-08-B-T6 x1	DS-10-08-B-T8 x2	DS-10-08-C-T1 x1	DS-10-08-C-T2 x2

Included In Your Kit

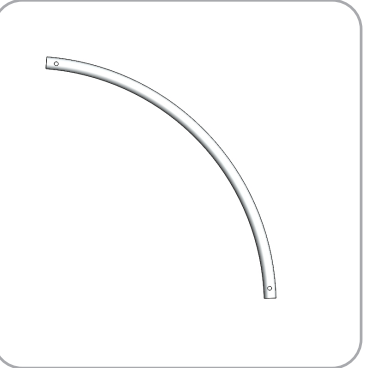
Tubes



DS-10-08-C-T3 x1

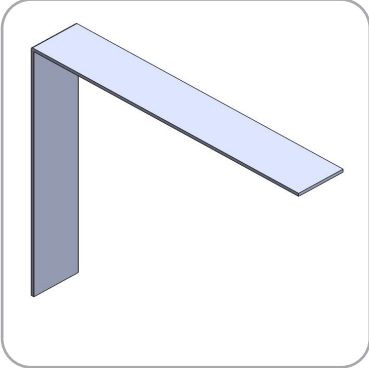


DS-10-08-C-T4 x1

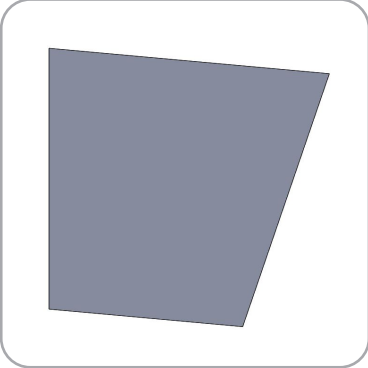


DS-10-08-C-T5 x1

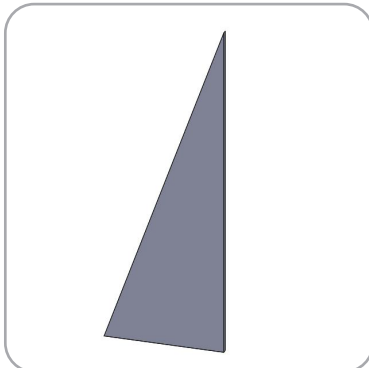
Graphics



FMLT-DS-10-08_A-FABRIC COVER x1

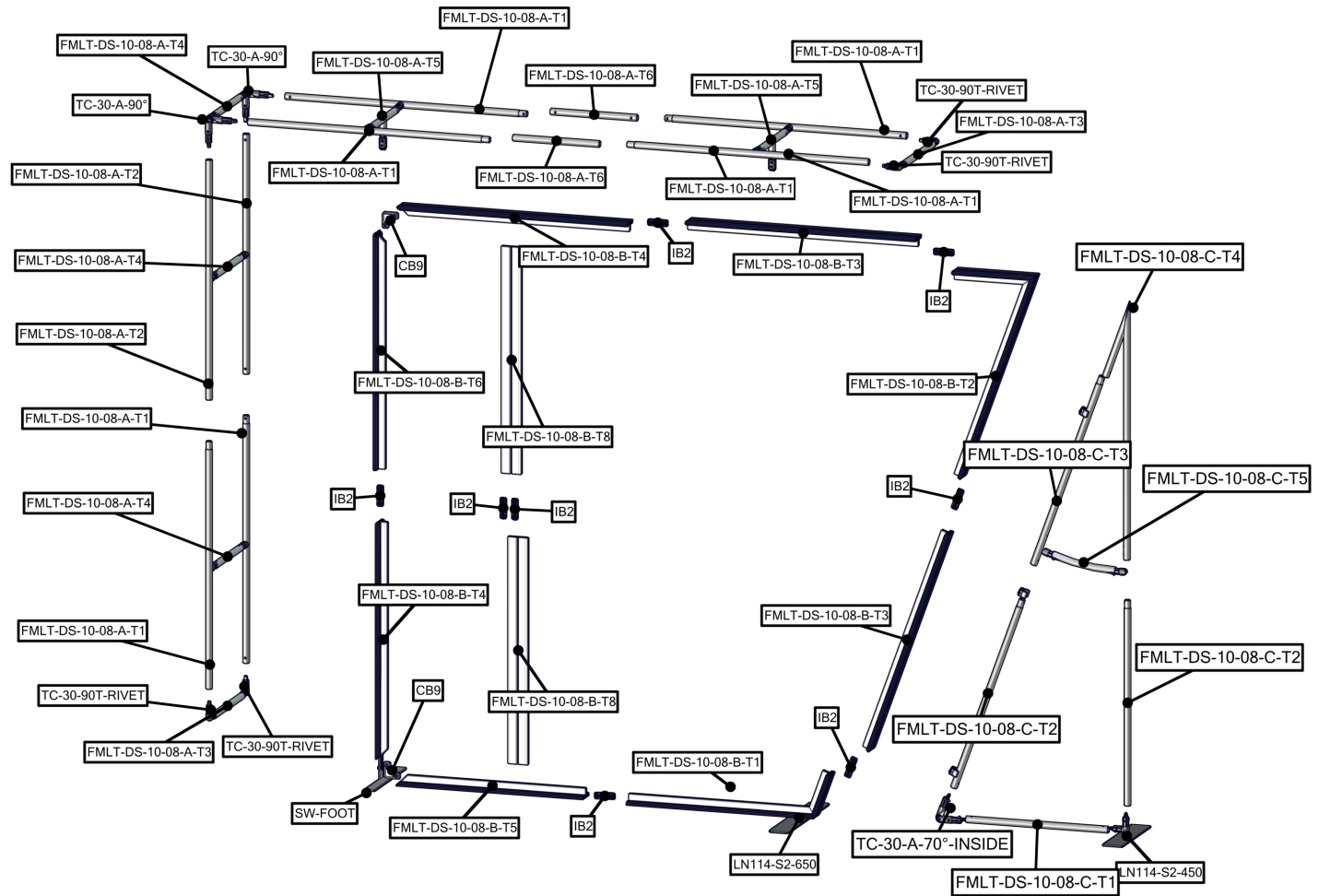


FMLT-DS-10-08_B-FABRIC COVER x1



FMLT-DS-10-08_C-FABRIC COVER x1

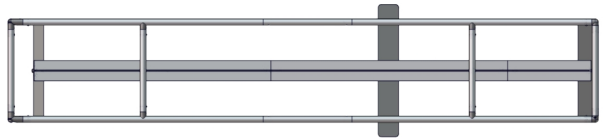
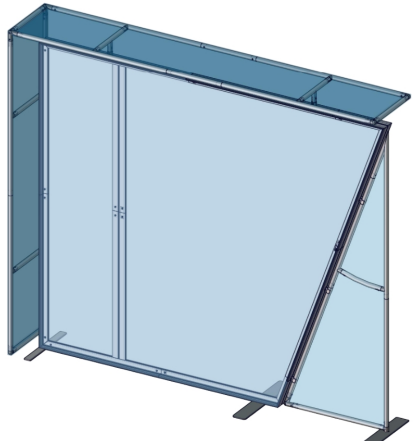
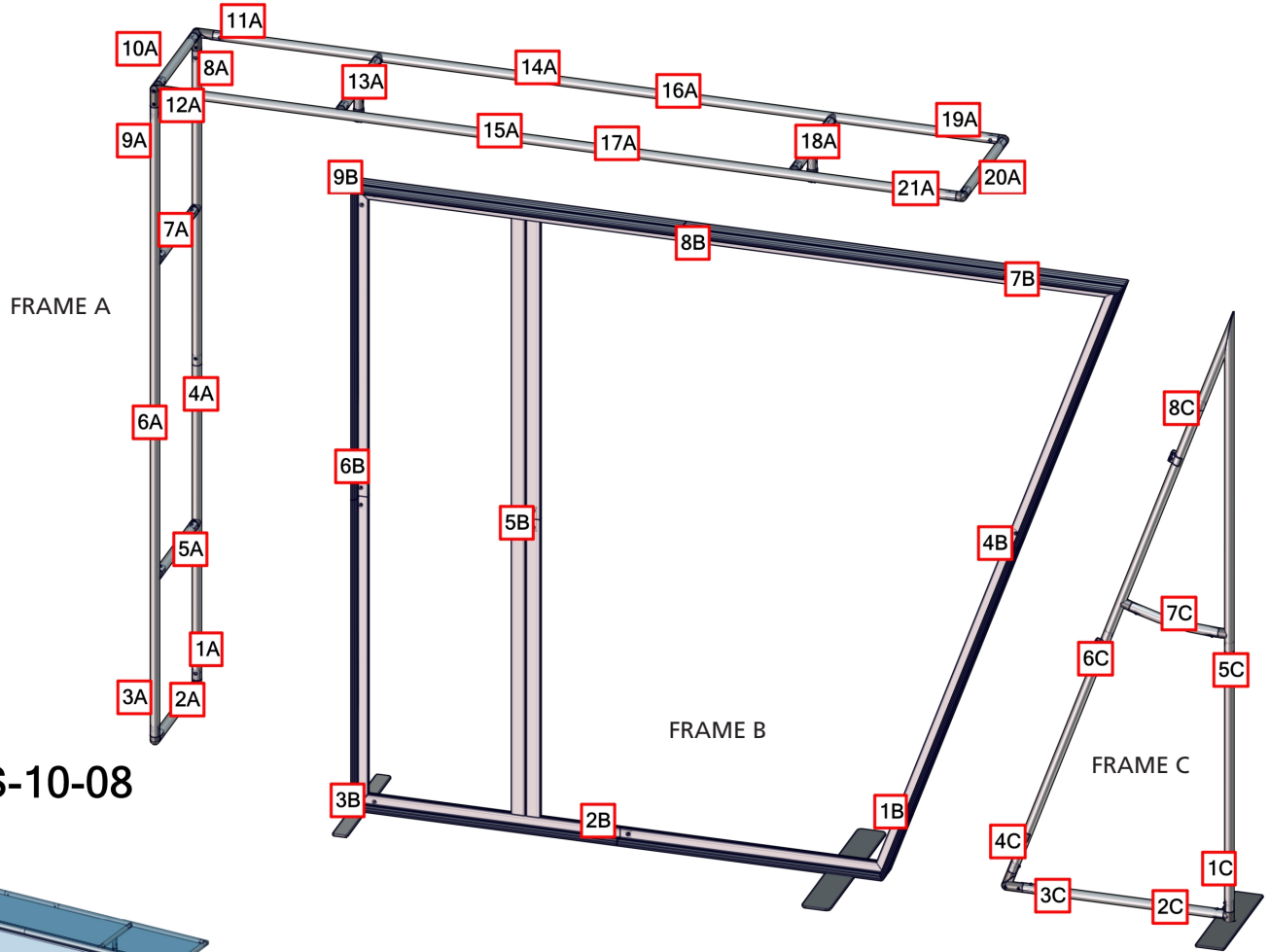
ITEM #	PART CODE	QTY	DESCRIPTION
1	FMLT-DS-10-08-A	1	FMLT-DS-10-08-A
1.1	FMLT-DS-10-08-A-T1	6	30MM STRAIGHT TUBE 1 WITH SWAGE FOR DS-10-08-A
1.2	FMLT-DS-10-08-A-T2	2	30MM STRAIGHT TUBE 2 FOR DS-10-08-A
1.3	FMLT-DS-10-08-A-T3	2	30MM STRAIGHT TOP / BOTTOM END TUBE 3 FOR DS-10-08-A
1.4	FMLT-DS-10-08-A-T4	3	30MM HORIZONTAL SPREADER TUBE 4 FOR DS-10-08-A
1.5	FMLT-DS-10-08-A-T5	2	30MM WELDED SPREADER TUBE 5 FOR DS-10-08-A
1.6	FMLT-DS-10-08-A-T6	2	30MM STRAIGHT TUBE 6 FOR DS-10-08-A
1.7	TC-30-A	2	TC-30-A ASSEMBLED AT 90°
1.8	TC-30-B	2	TC-30-B ASSEMBLY WITH 0° SNAP BUTTON
1.9	TC-30-C	8	TUBING ADAPTER FOR 30MM TUBING
1.1	TC-30-L	2	TC-30-L ASSEMBLY
1.11	TC-30-90T	4	90 DEGREE ELBOW JOINT FOR 30MM TUBING
1.12	FMLT-DS-10-08-A-FABRIC COVER	1	FMLT-DS-10-08-A-FABRIC COVER
2	FMLT-DS-10-08-B	1	FMLT-DS-10-08-B
2.1	FMLT-DS-10-08-B-T1	1	PHFC4 BOTTOM WELDED EXTRUSION 1 FOR DS-10-08-B
2.2	FMLT-DS-10-08-B-T2	1	PHFC4 TOP WELDED EXTRUSION 2 FOR DS-10-08-B
2.3	FMLT-DS-10-08-B-T3	2	PHFC4 STRAIGHT EXTRUSION 3 FOR DS-10-08-B
2.4	FMLT-DS-10-08-B-T4	2	PHFC4 STRAIGHT EXTRUSION 4 FOR DS-10-08-B
2.5	FMLT-DS-10-08-B-T5	1	PHFC4 STRAIGHT EXTRUSION 5 WITH 45° MITER CUT FOR DS-10-08-B
2.6	FMLT-DS-10-08-B-T6	1	PHFC4 STRAIGHT EXTRUSION 6 WITH 45° MITER CUT (RIGHT) FOR DS-10-08-B
2.7	FMLT-DS-10-08-B-T8	2	PS2 STRAIGHT EXTRUSION 8 FOR DS-10-08-B
2.8	CB9	2	CB9 CORNER BRACKET
2.9	IB2	8	IB2 INLINE CONNECTOR
2.1	LN114-S2-650-A	1	LINEAR FOOT WITH COUNTER SINK HOLES, 650 LENGTH WITH CONFIGURATION A HARDWARE
2.11	SW-FOOT-500-LN	1	SMART WALL, 500MM LONG, INCLUDES 1 FOOT, 1 LN100 & 2 TUR00052
2.12	FMLT-DS-10-08-B-FABRIC COVER	2	FMLT-DS-10-08-B-FABRIC COVER
3	FMLT-DS-10-08-C	1	FMLT-DS-10-08-C
3.1	FMLT-DS-10-08-C-T1	1	30MM BOTTOM TUBE 1 FOR DS-10-08-C
3.2	FMLT-DS-10-08-C-T2	2	30MM SIDE TUBE 2 FOR DS-10-08-C
3.3	FMLT-DS-10-08-C-T3	1	30MM SIDE TUBE 3 WITH PART C FOR DS-10-08-C
3.4	FMLT-DS-10-08-C-T4	1	WELDED SIDE TUBE WITH PART C FOR DS-10-08-C
3.5	FMLT-DS-10-08-C-T5	1	30MM CURVED SPREADER TUBE 5 FOR DS-10-08-C
3.6	TC-30	3	SILVER ANODIZE FINISH 30MM TUBE CLAMP
3.7	TC-30-A	1	TC-30-A ASSEMBLED AT 70° WITH SNAP BUTTONS ON INSIDE
3.8	TC-30-C	2	TUBING ADAPTER FOR 30MM TUBING
3.9	TC-30-90B	1	TC-30-90B ASSEMBLY
3.1	LN114-S2-450	1	LINEAR FOOT WITH COUNTERSUNK HOLES
3.11	LN114-SCRW	1	M10X45MM SOCKET FLAT CAP SCREW, BLACK FINISH ALLOY STEEL
3.12	FMLT-DS-10-08-C-FABRIC COVER	1	FMLT-DS-10-08-C-FABRIC COVER



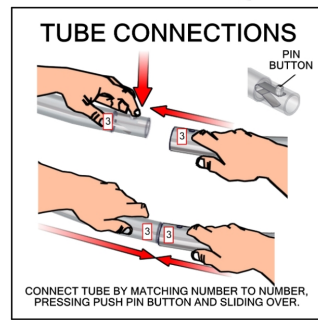
Please note: Assembly for monitor mount start on page 10

Labeling Diagram

FMLT-DS-10-08



OVERHEAD VIEW

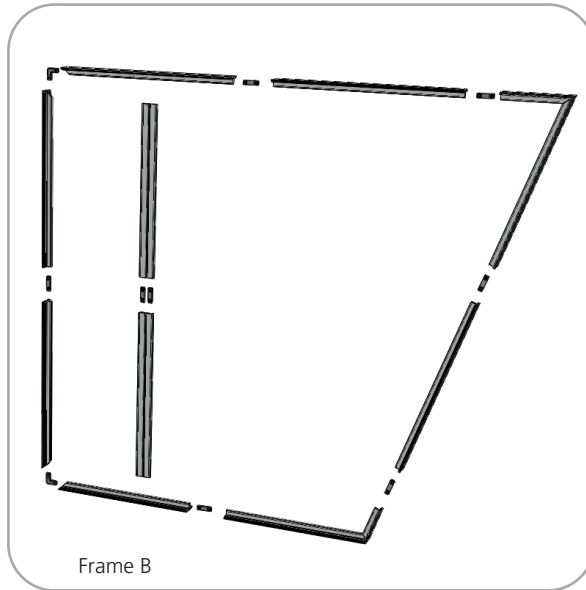
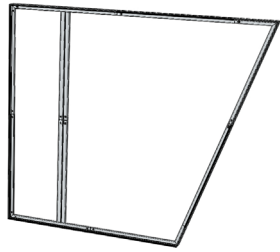


Kit Assembly

Step by Step

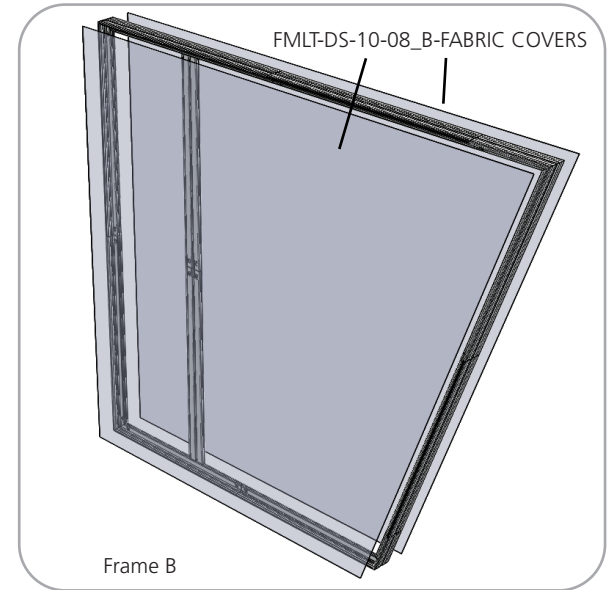
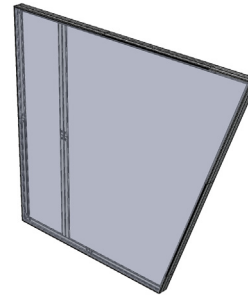
Step 1.

Assemble frame B. Connect the perimeter extrusion (PHFC4) with the inline bracket connectors (IB2) and the corner bracket connectors (CB9). Connect the PS2 extrusions with the inline brackets (IB2) and then attach them onto the PHFC4 with the pre-installed camlocks.



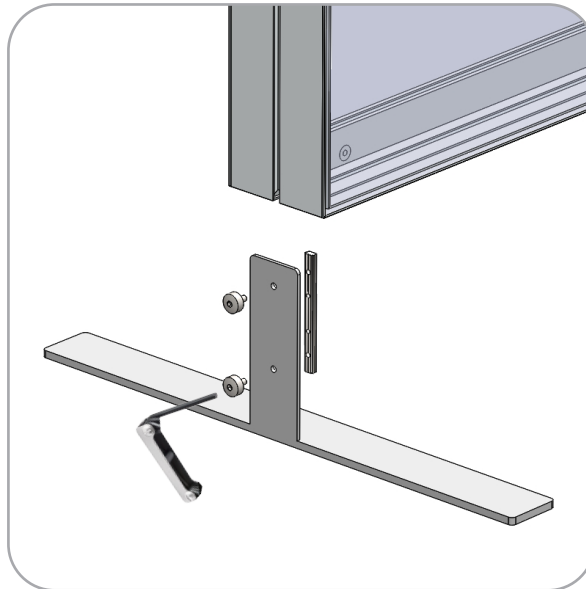
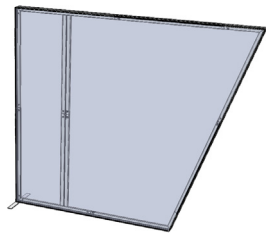
Step 2.

Apply fabric panels onto frame B. First, press the FCE-2 into the 4 corners of the frame. Then, press FCE-2 at the middle of the panel. Press along the rest of the perimeter.



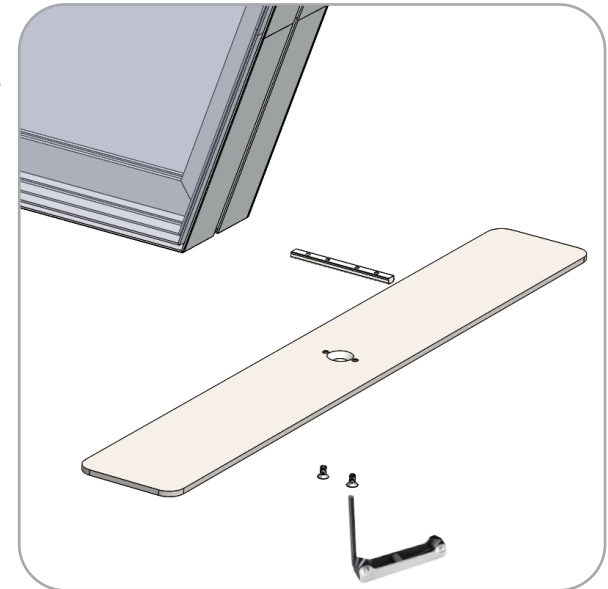
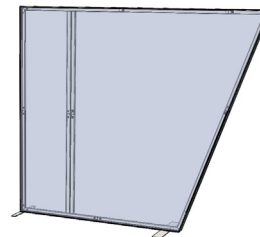
Step 3.

Connect the left stabilizing base onto frame B with the provided handtool.



Step 4.

Connect the right stabilizing base onto frame B with the provided handtool.

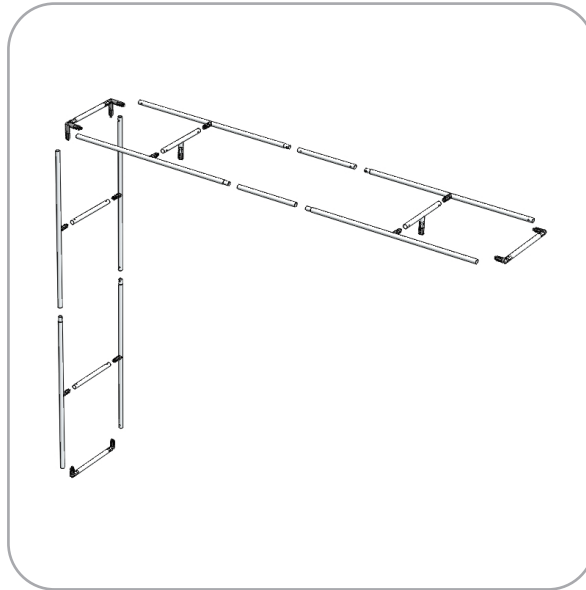
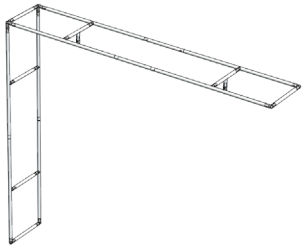


Kit Assembly

Step by Step

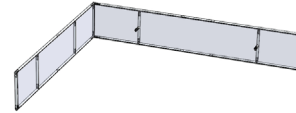
Step 5.

Assemble frame A. The tubes easily connect with snap buttons.



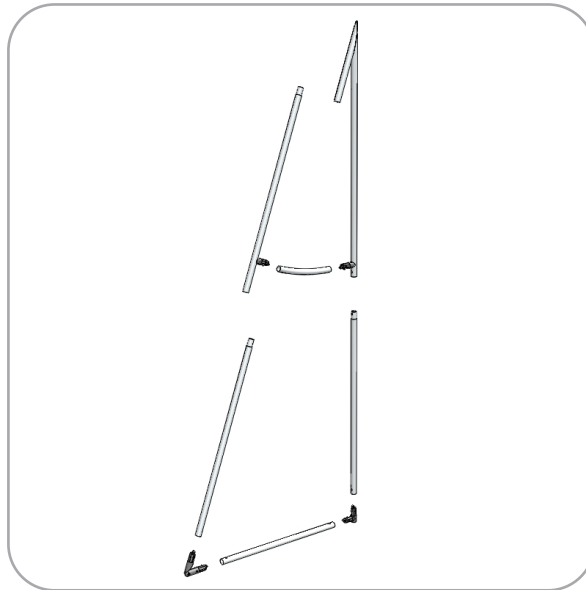
Step 6.

Apply the pillowcase onto frame A. Make sure that the 2 posts with camlocks are protruding out trough the access holes. Zipper up the pillowcase from behind.



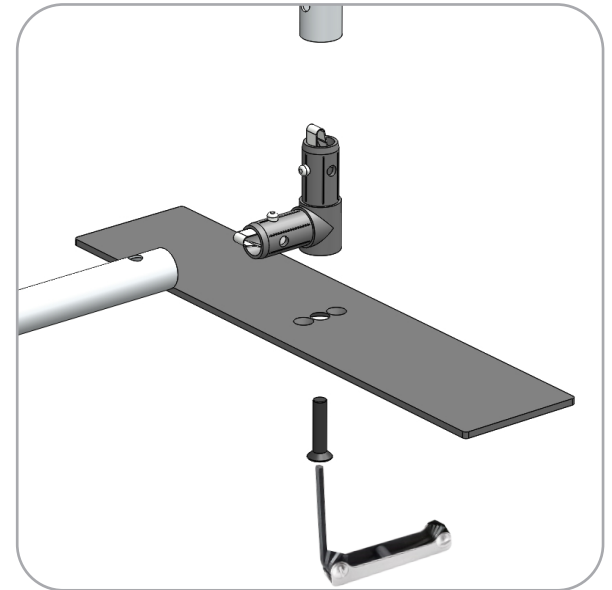
Step 7.

Assemble frame C. The tubes easily connect with snap buttons.



Step 8.

Assemble frame C. Attach the stabilizing base with the provided handtool.

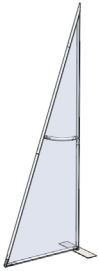


Kit Assembly

Step by Step

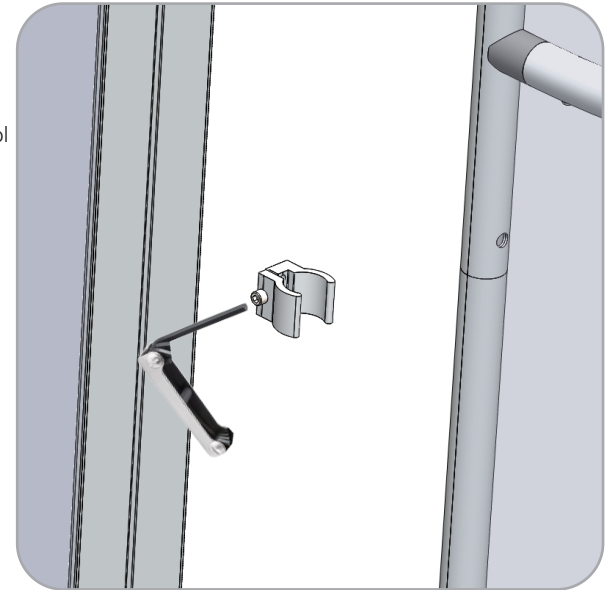
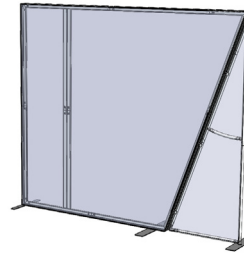
Step 9.

Apply the pillowcase onto frame C. Zipper up the pillowcase from below.



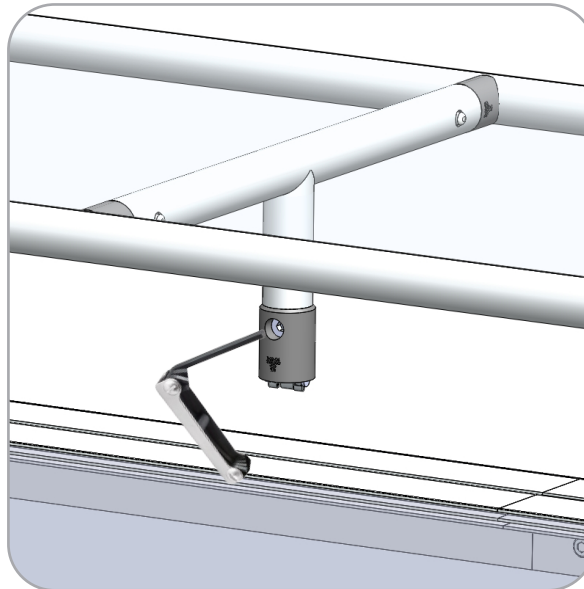
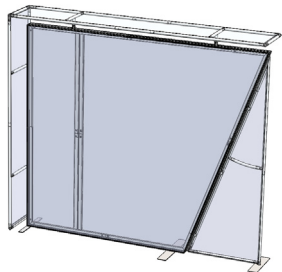
Step 10.

Attach frame C onto frame B with the 3 provided tube clamps (TC30). Use the provided handtool to securely fasten the frame.



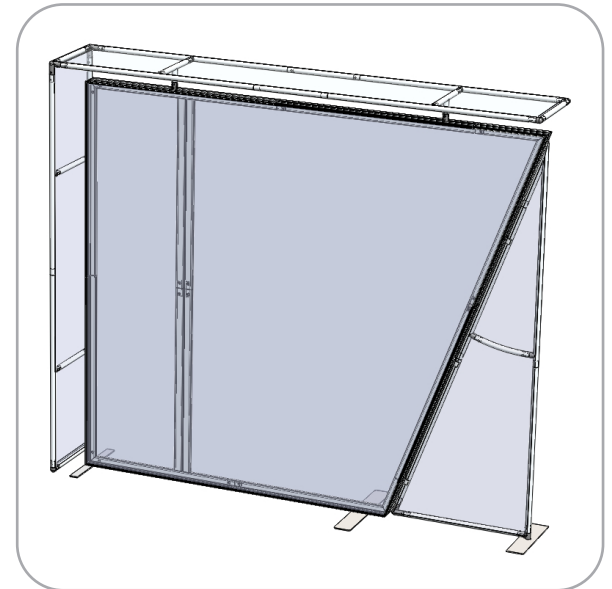
Step 11.

Attach frame A onto frame B with the 2 protruding tubes with pre-installed camlocks (TC-30-L). Use the provided handtool to securely fasten the frame.



Step 12.

Assembly Complete.



Included In Your Kit

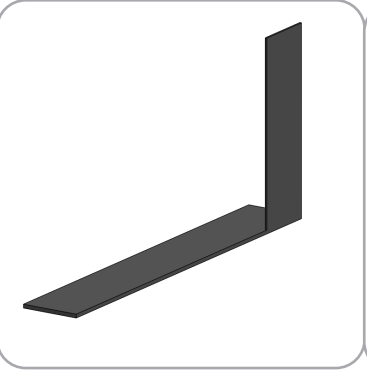
Tools, Components, & Connectors



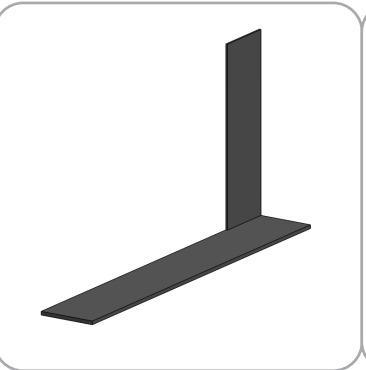
ALLEN KEY SET x1



LM-MB x1



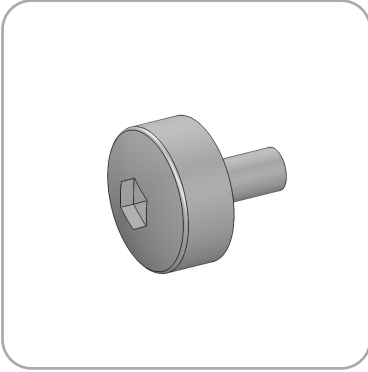
PM453-MM-FOOT-L x1



PM453-MM-FOOT-R x1



LN100 x4



M5 THUMBSCREW x8



PH2-300-TG

Included In Your Kit

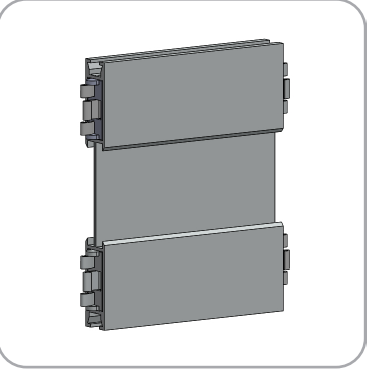
Tubes



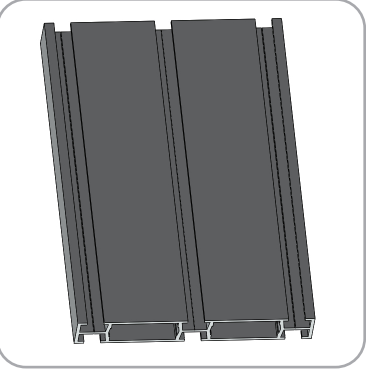
PH2-350-L-L x2



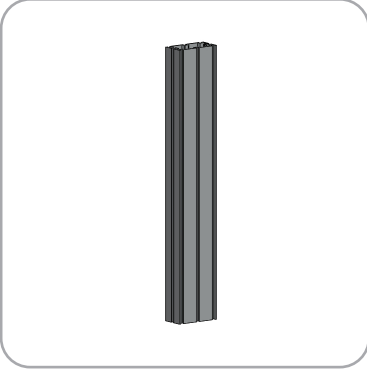
PH-350-L-L x1



PH5-100-L-L x2



PM4S4-150 x2

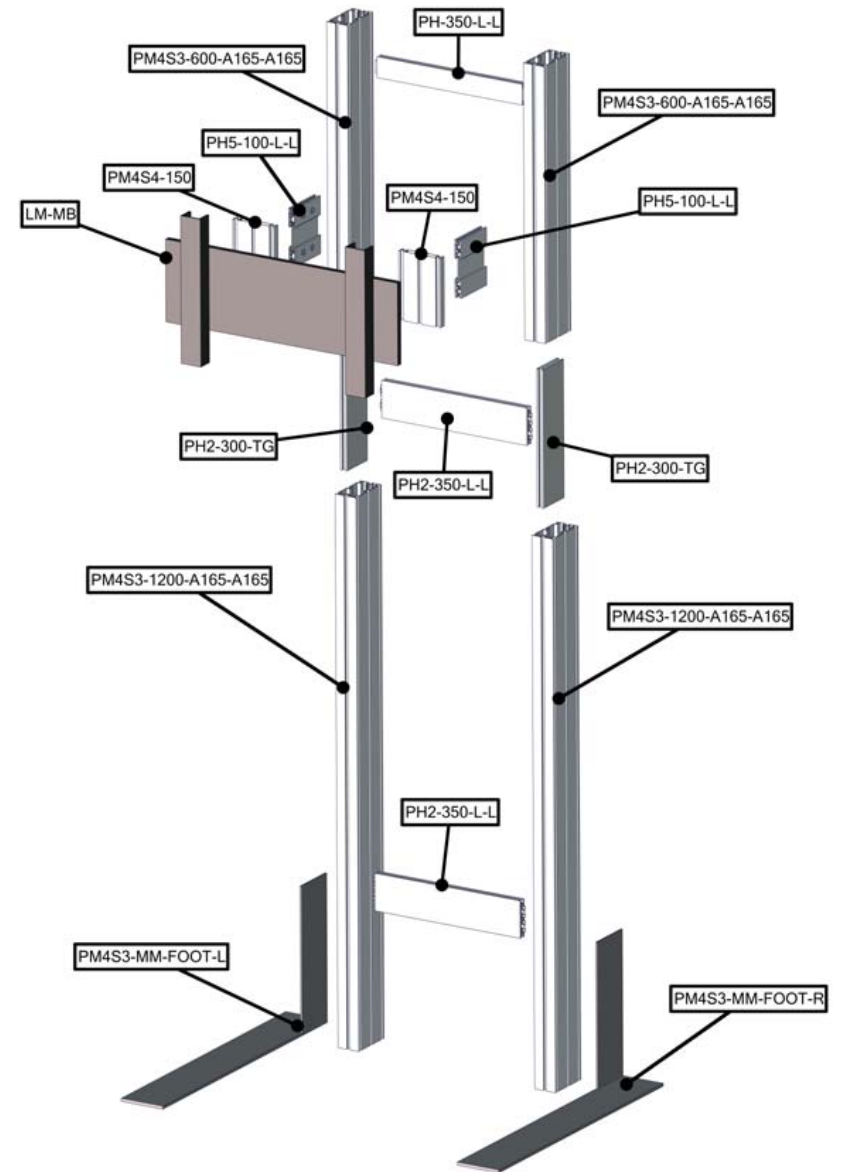


PM4S3-600-A165-A165 x2



PM4S3-1200-A165-A165 x2

PART CODE	QTY	DESCRIPTION
PH-350-L-L	1	350MM LENGTH OF PH EXTRUSION-WITH CAM LOCKS BOTH ENDS
PH2-350-L-L	2	350MM LENGTH OF PH2 EXTRUSION-WITH CAM LOCKS BOTH ENDS
PH5-100-L-L	2	100MM LENGTH OF PH5 EXTRUSION-WITH CAM LOCKS BOTH ENDS
PM4S4-150	2	150MM LENGTH OF PM4S4 EXTRUSION
PM4S3-1200-A165-A165	2	1200MM LENGTH OF PM4S3 EXTRUSION-WITH STOPS BOTH ENDS
PM4S3-600-A165-A165	2	600MM LENGTH OF PM4S3 EXTRUSION-WITH STOPS BOTH ENDS
PH2-300-TG	2	300MM LENGTH OF PH2 EXTRUSION WITH TENSION GLIDES
SW-FOOT-650A-R	1	PM4S3 MONITOR MOUNT FOOT, RIGHT
SW-FOOT-650A-L	1	PM4S3 MONITOR MOUNT FOOT, LEFT
LM-MB	1	LARGE MONITOR MOUNTING BRACKET FOR LARGE SIZE (32"-70") FLAT PANEL LCD
5MM ALLEN-T	1	5MM "T" ALLEN KEY TOOL, RED HANDLE
INSTRUCTIONS	1	SETUP INSTRUCTIONS
OCE	1	EXPANDING PLASTIC CASE

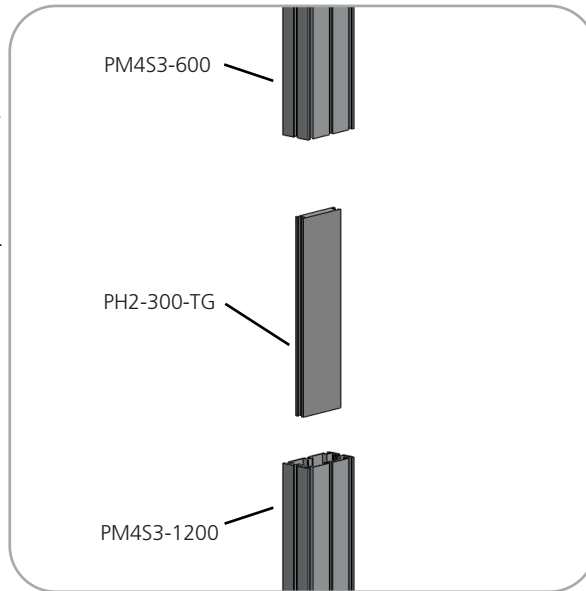


Kit Assembly

Step by Step

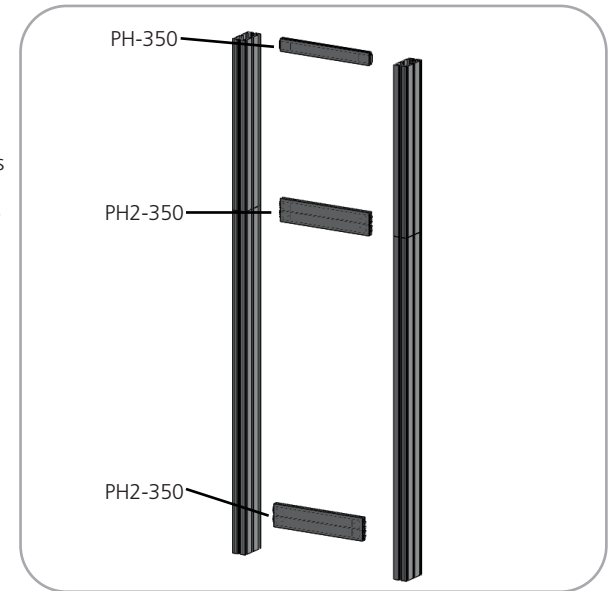
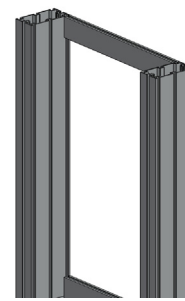
Step 1.

Locate your PM4S3-600, PM4S3-1200, and PH2-300-TG extrusions. Place the PH2 into one side of the PM4S3-1200 so that it goes as deep as the internal pins. Connect the PM4S3-600 by sliding it over the PH2. Repeat for the other side.



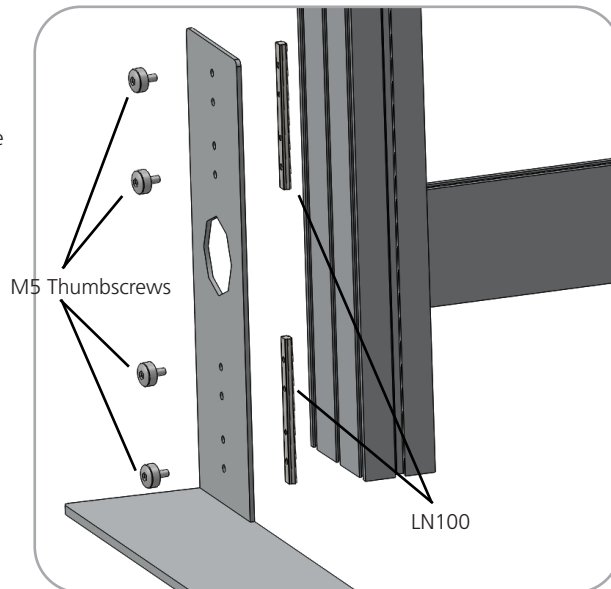
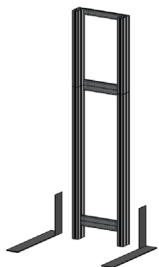
Step 2.

Collect your PH-350 and both PH2-350 extrusions. Lock the extrusions into the back channel of the three channel PM4S3 faces as shown in the images figures. Be sure the locks face toward the back of the assembly.



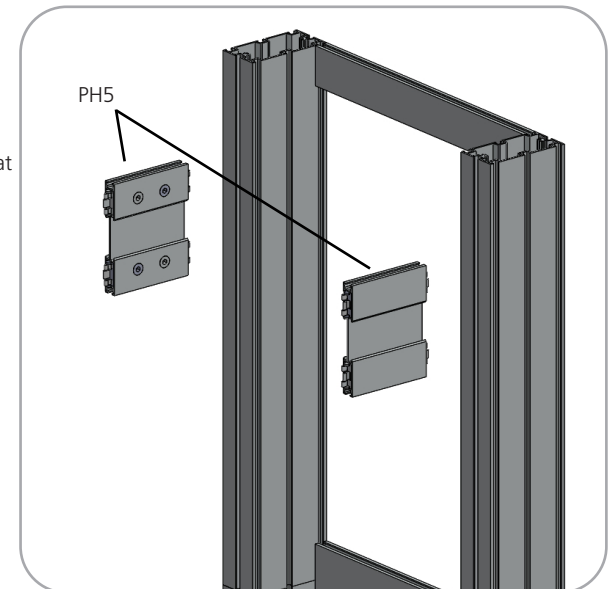
Step 3.

Locate your your M5 thumbscrews, LN100s, and both PM4S3-MM Feet. Slide the LN100s into the middle channel of the PM4S3. Screw your M5 thumbscrews through the base and into the LN100 holes as shown in the figure right.



Step 4.

Measure from the ground to the center of the hole in your main kit's graphic. Lock the center of your PH5 into the PM4S3 stacks at the height you collected.

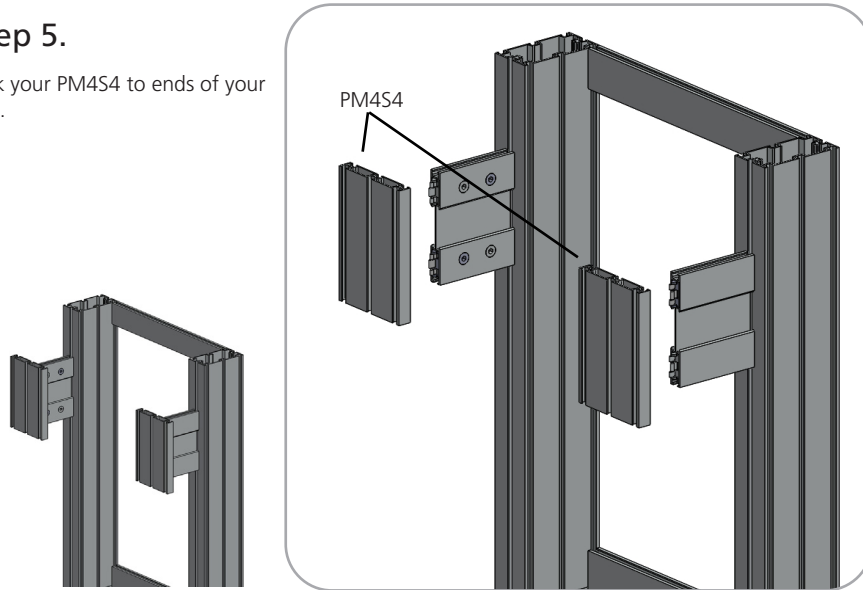


Kit Assembly

Step by Step

Step 5.

Lock your PM4S4 to ends of your PH5.



Step 6.

NOTE: Your main backwall assembly must be completed with graphics before completing this step of the monitor kit. Set your monitor stand so that the extrusion arms fit through the graphic hole. Use the provided wingnuts and washers with the detail below to complete your monitor stand, sandwiching the graphic.

