

Formulate Designer Series 10' Backwall - Kit 03

FMLT-DS-10-03

Formulate™ Designer Series 10ft displays have unique stylistic features and shapes, are portable and easy to assemble. The aluminum tube frame features snap-buttons and/ or spigot connections and zipper pillowcase fabric graphics. All displays come in portable, wheeled transit cases. Simply pull the pillowcase fabric graphic(s) over the frame and zip.



features and benefits:

- Premium aluminum tube frames with snap button/ spigot assembly
- Easy to store and ship
- Quick to set up
- Weighted feet for added stability
- Two zipper pillowcase fabric graphics
- Lifetime limited hardware warranty against manufacturer defects

dimensions:

Hardware	Graphic
<p>Assembled unit: 119.95" w x 98.36" h x 26.4" d 3046.77mm(w) x 2498.39mm(h) x 670.58mm(d)</p> <p>Approximate weight with cases: 56 lbs / 25.4 kgs</p>	<p>Please be sure to include a 2" bleed around the perimeter.</p> <p>Refer to related graphic template for more information.</p> <p>Visit: www.exhibitors-handbook.com/graphic-templates</p>
<p>Shipping</p> <p>Packing case(s): 1 OCE Case</p> <p>Shipping dimensions: 16.75" w x 64.25" h x 16.88" d 425.5mm(w) x 1632mm(h) x 428.8mm(d)</p> <p>Approximate total shipping weight (includes cases & graphics): 71 lbs / 32.2 kgs</p>	
<h3>additional information:</h3> <p>Graphic material: dye-sublimation zipper pillowcase fabric</p>	

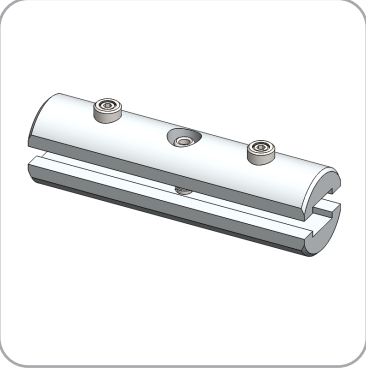
We are continually improving and modifying our product range and reserve the right to vary the specifications without prior notice. All dimensions and weights quoted are approximate and we accept no responsibility for variance. E&OE. See Graphic Templates for graphic bleed specifications.

Included In Your Kit

Tools, Components, & Connectors



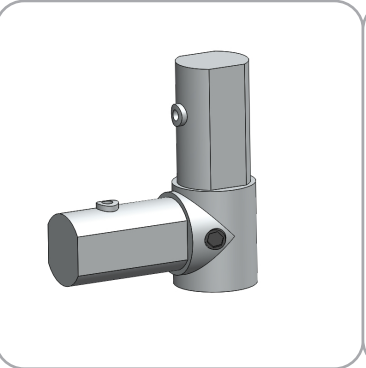
ALLEN KEY SET x1



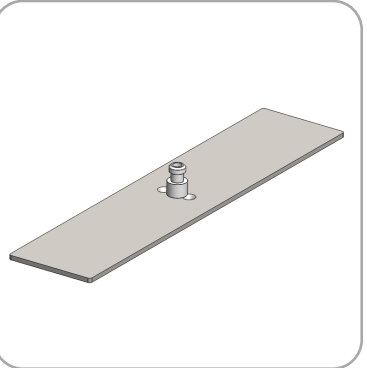
ES30 x12



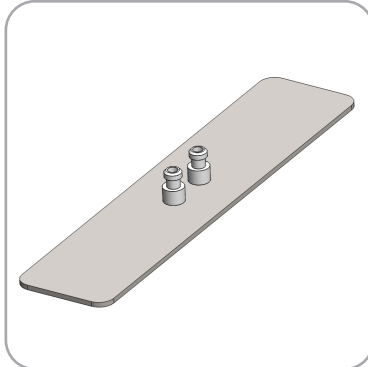
TCH-30 x2



ES30-90B x4

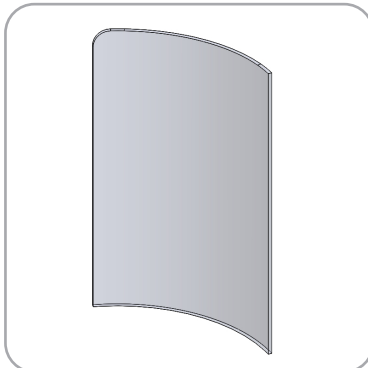


STABILIZING BASE A x2

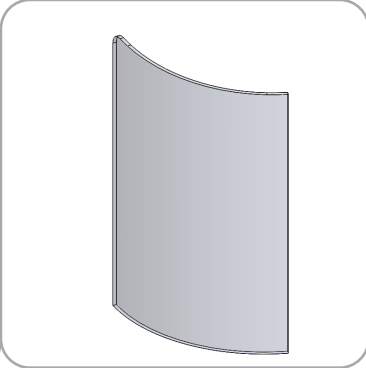


STABILIZING BASE B-2 x1

Graphics



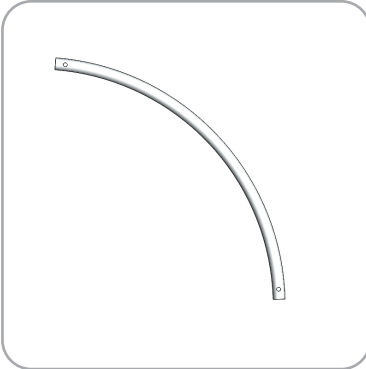
FMLT-DS-10-03-A-G x1



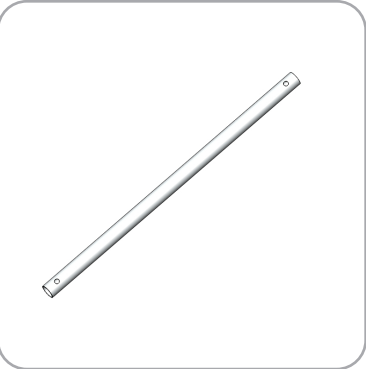
FMLT-DS-10-03-B-G x1

Included In Your Kit

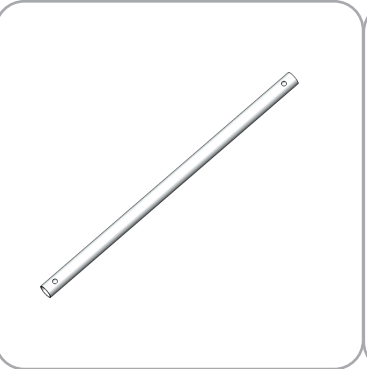
Tubes



DS-10-03-A-T1 x1



DS-10-03-A-T2 x3



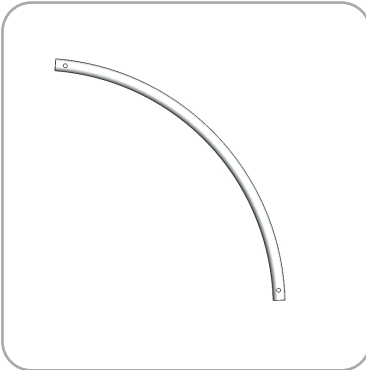
DS-10-03-A-T3 x1



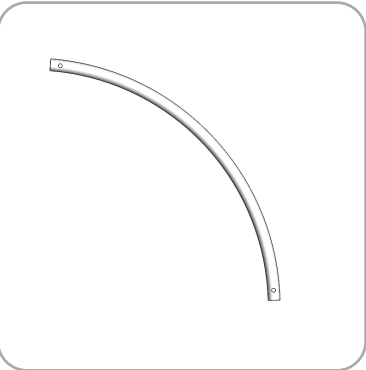
DS-10-03-A-T4 x1



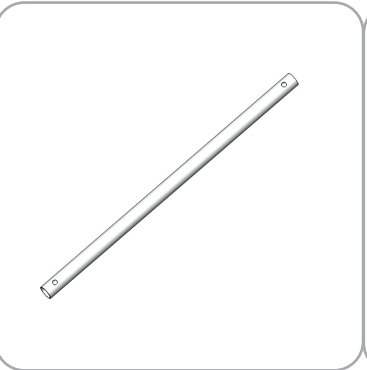
DS-10-03-A-T5 x1



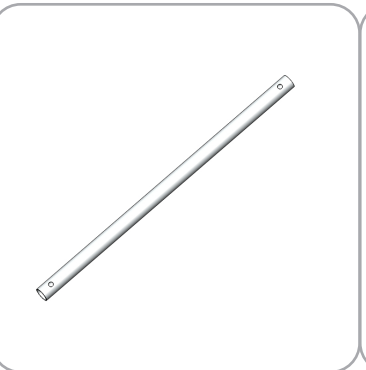
DS-10-03-A-T6 x1



DS-10-03-B-T1 x1



DS-10-03-B-T2 x3



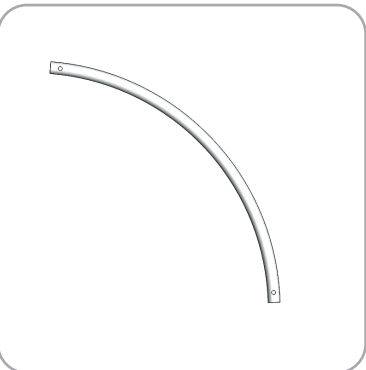
DS-10-03-B-T3 x1



DS-10-03-B-T4 x1

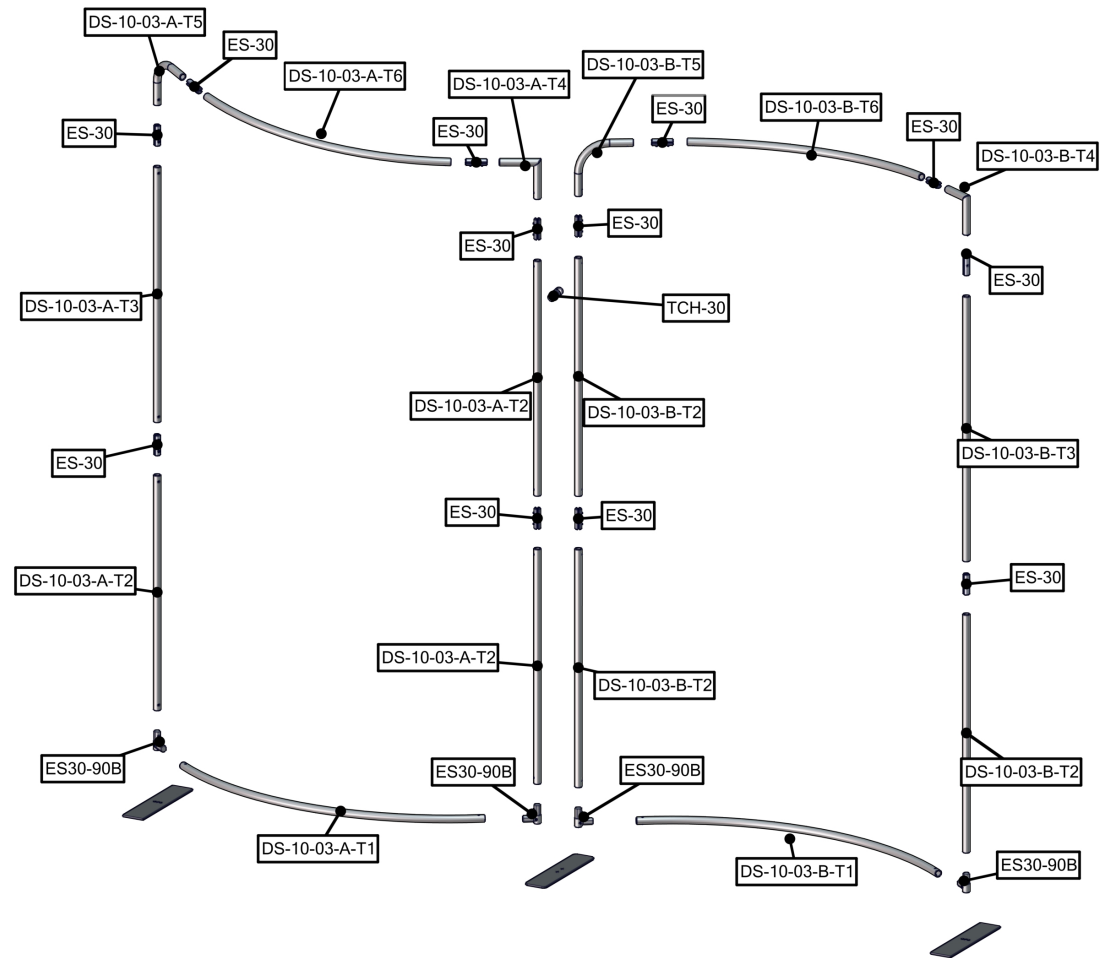


DS-10-03-B-T5 x1



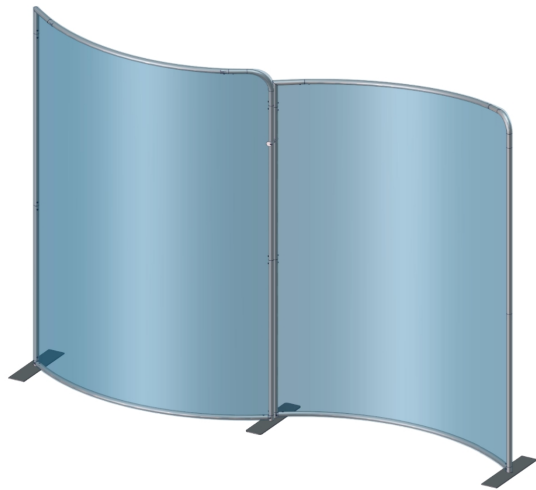
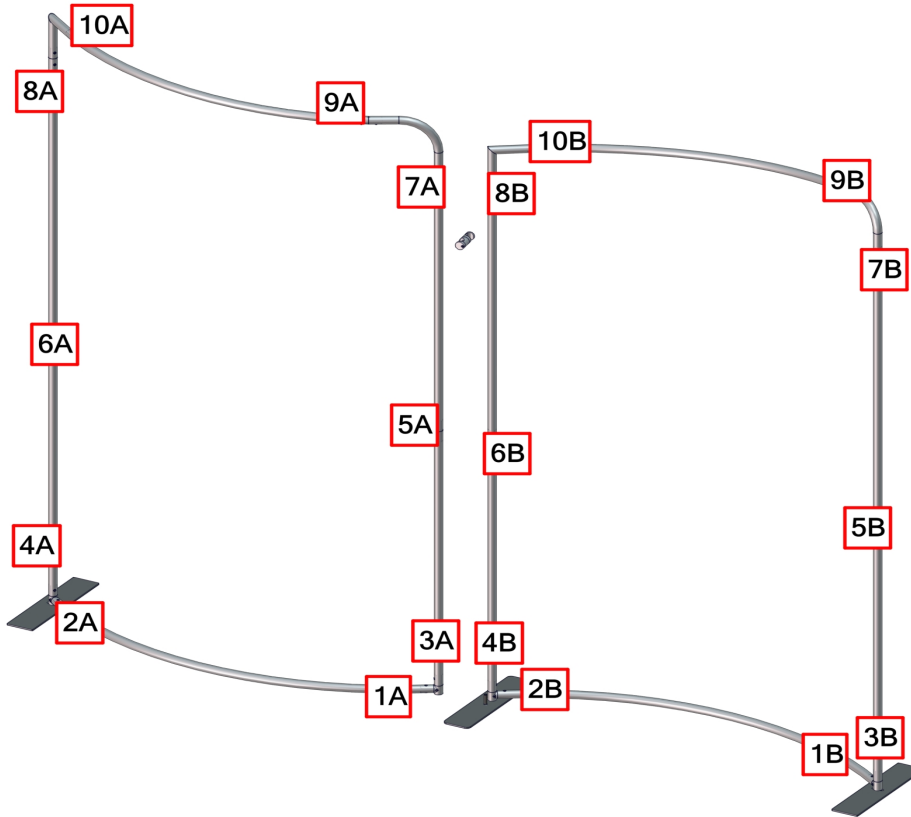
DS-10-03-B-T6 x1

PART CODE	QTY	DESCRIPTION
DS-10-03-B-T1	1	30MM CURVED BOTTOM TUBE 1 FOR DS-10-03
DS-10-03-B-T2	3	30MM SIDE TUBE 2 FOR DS-10-03
DS-10-03-B-T3	1	30MM SIDE TUBE 3 FOR DS-10-03
DS-10-03-B-T4	1	30MM WELDED CORNER TUBE 4 FOR DS-10-03
DS-10-03-B-T5	1	30MM CURVED CORNER TUBE 5 FOR DS-10-03
DS-10-03-B-T6	1	30MM CURVED TOP TUBE 6 FOR DS-10-03
ES30-90B	4	30MM CORNER CONNECTOR WITH M10 INSERT
DS-10-03-B-G<As Machined>	1	FABRIC COVER FOR DS-10-03
ES-30	12	EXPANDING SPIGOT FOR 30MM TUBE
LN114-S3	1	LINEAR FOOT FOR TWO FRAMES, 450MM X 100MM X 5MM
TCH-30	2	30MM FABRIC CLAMP
DS-10-03-A-T1<As Machined>	1	30MM CURVED TUBE 1 FOR DS-10-03-B
DS-10-03-A-T2	3	30MM SIDE TUBE 2 FOR DS-10-03-B
DS-10-03-A-T3	1	30MM SIDE TUBE 3 FOR DS-10-03-B
DS-10-03-A-T4	1	30MM WELDED CORNER TUBE 4 FOR DS-10-03-B
DS-10-03-A-T5	1	30MM CURVED CORNER -2'
DS-10-03-A-T6	1	30MM CURVED TOP TUBE
DS-10-03-A-G	1	FABRIC COVER FOR DS-10-03-B
LN114-SCRW	4	M10X45MM SOCKET FLAT CAP SCREW, BLACK FINISH ALLOY STEEL
LN114-S2-450	2	LINEAR FOOT WITH COUNTERSUNK HOLES

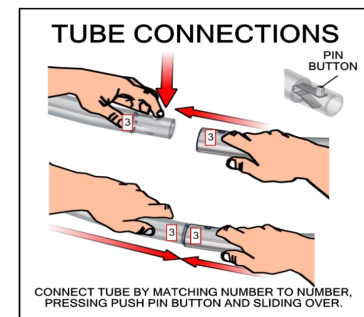


Labeling Diagram

FMLT-DS-10-03



OVERHEAD VIEW

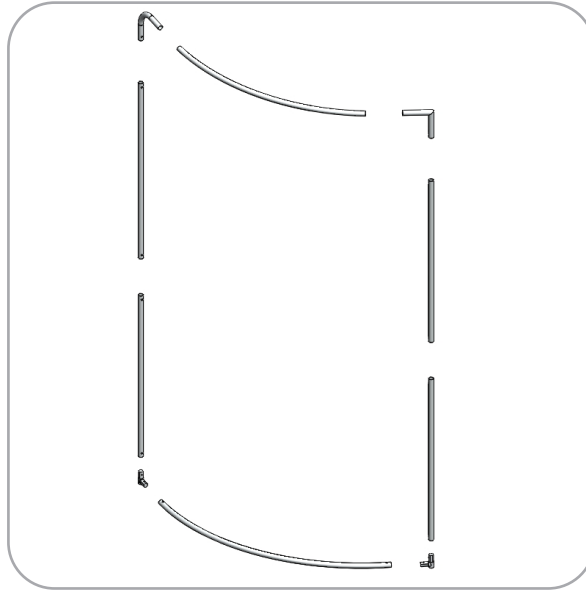
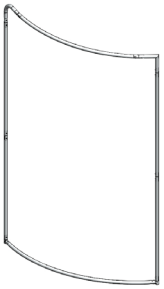


Kit Assembly

Step by Step

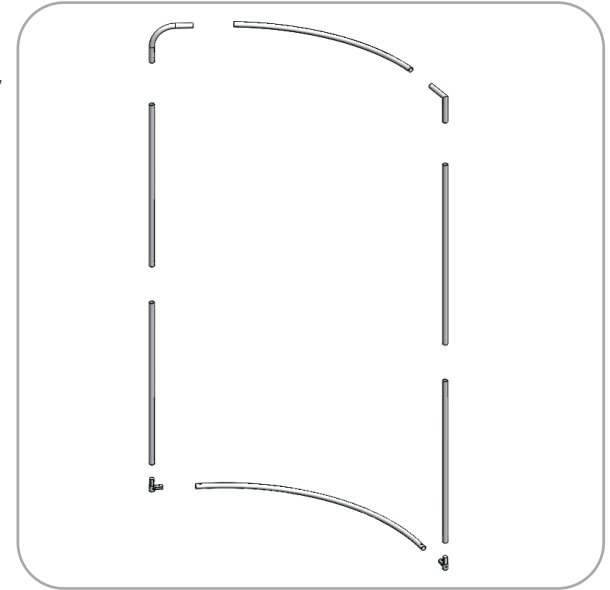
Step 1.

Gather the components necessary to assemble frame A. Assemble your frame following the order specified in the "Labeling Diagram"



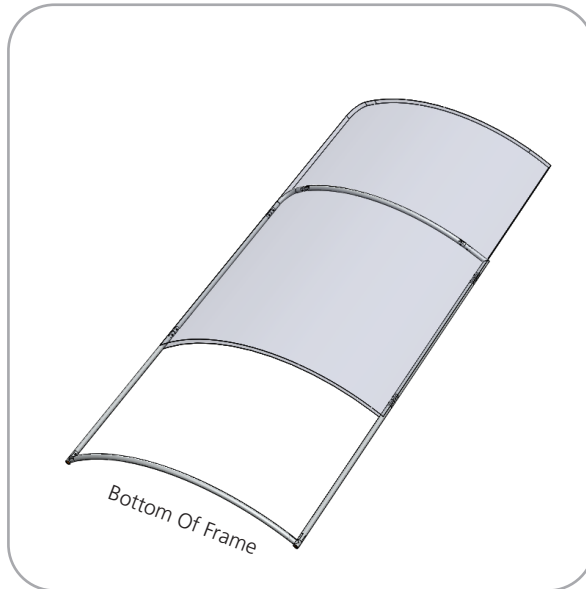
Step 2.

Gather the components necessary to build frame B. Assemble your frame following the order specified in the "Labeling Diagram"



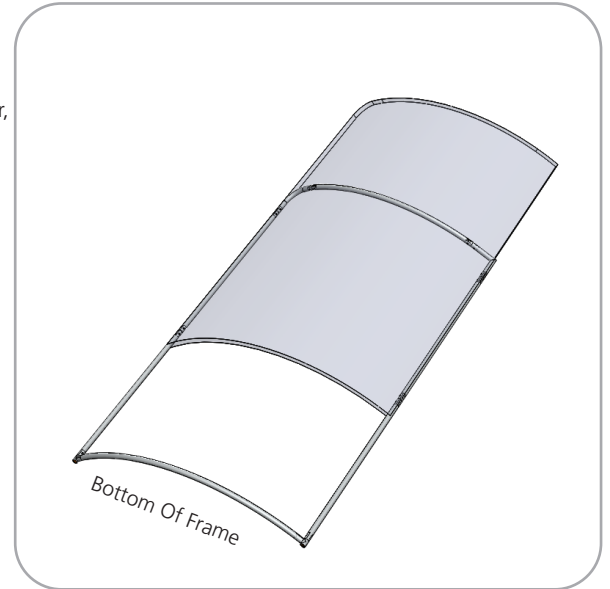
Step 3.

Locate the fabric cover for frame A. With the frame flat on the floor, pull the cover over the top of the frame. Zip the fabric cover to enclose the frame.



Step 4.

Locate the fabric cover for frame B. With the frame flat on the floor, pull the cover over the top of the frame. Zip the fabric cover to enclose the frame.

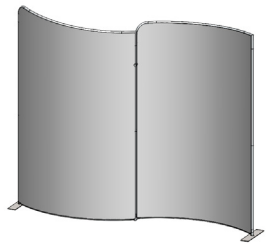


Kit Assembly

Step by Step

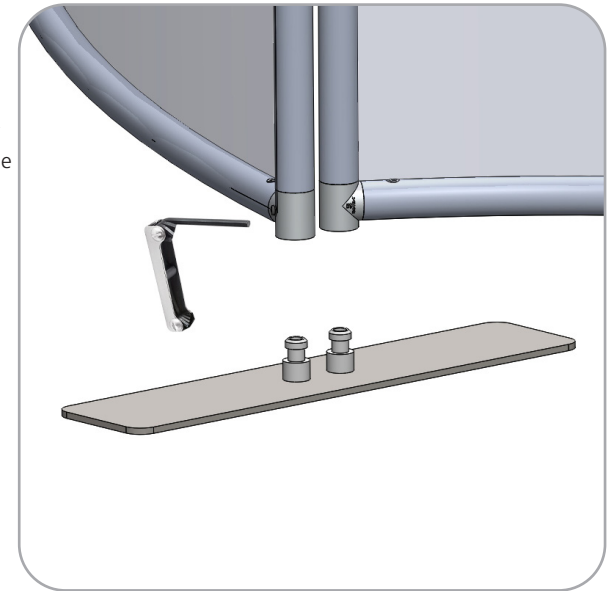
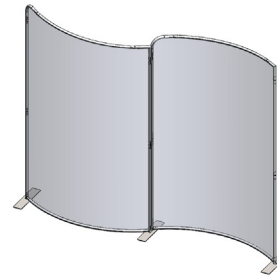
Step 5.

Locate both Stabilizing Foot A. Attach the foot to the bottom of the ES30-90B on the right side of Frame A and the left side of Frame B. Tighten the screw on the side of the ES30-90B to lock it in place.



Step 6.

Locate the Stabilizing Foot B-2. Attach the foot to the bottom of the ES30-90B on the right side of Frame A and the left side of Frame B. Tighten the screw on the sides of the ES30-90Bs to lock them in place.



Step 7.

Locate the TCH-30's. Use the screws on the top of the TCH30's to tie the tubes of frames A and B together at the center of the kit.

